



# 2010 Petrol MOT Database Update Installation Instructions

Disk includes:  
WGTS2 version 2.90.0  
WGTS3 version 1.0.4

WGTS3 is suitable for  
700 Series machines only

IMPORTANT:

***VOSA state that this update must be installed on, or  
as soon as possible after 1<sup>st</sup> August 2010,  
And expect you to install it during the month of  
August***

## Dear Customer

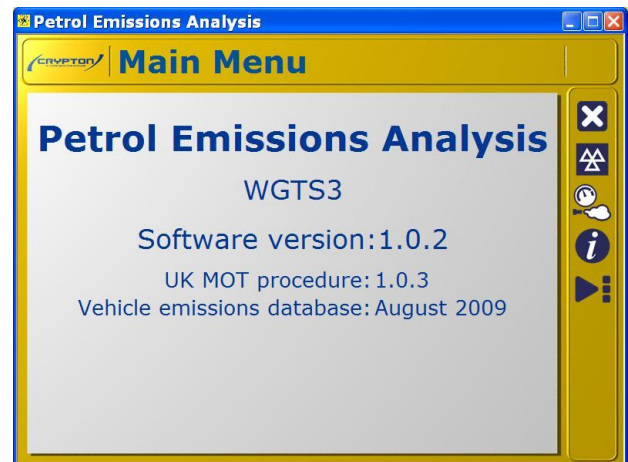
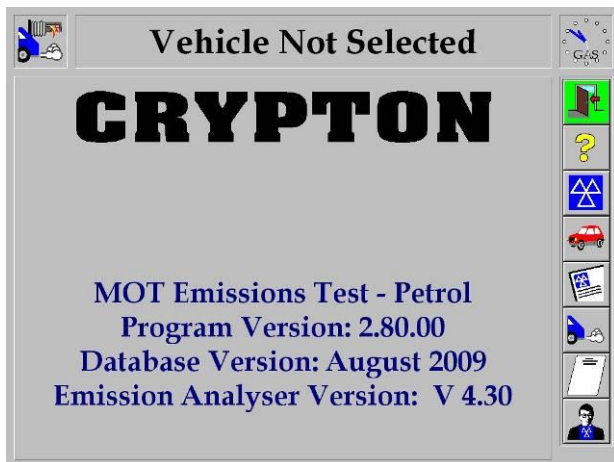
Please follow the instructions below carefully to ensure a trouble free installation of this program.

### **Note:**

***This program should only be installed onto machines running the 2009 Database.***

The Database version is displayed on the front screen of your petrol emission test program; please verify your Petrol Emissions Test program shows Database August 2009 before proceeding.

If your machine shows a Database version earlier than 2009 please call our support team on the number at the back of this document.



The installation CD contains both variants of 'Emission Test Petrol'.

**WGTS3 - suitable for all 700 series machines**

**WGTS2 - suitable for all CMT, 296, STP, and 600 series machine types**

The installer should automatically install the correct software for your machine type.

If you own a machine without a CD drive please see page 6 of this instruction sheet.

**Use of a suitable drive cleaning disk may be required for some machines if disk read errors are encountered. These are available through electronic goods retailers and PC outlets.**

To complete the installation you will need an authorisation code, so please ensure you install it during office hours. Office hours are: Mon-Fri 8:30 hrs to 16:30 hrs.

### **IMPORTANT:**

**Please do not call until prompted by the software, Codes are unique to each installation and cannot be issued in advance.**

If you have any problems installing the software, please call/fax, on the numbers on the last page of these instructions, during the hours of Mon-Fri 8:00 hrs to 17:00 hrs.

Please give **exact** details of any error messages displayed.

**Always check with the Crypton Product Support before calling a service engineer**

**INSTALLATION PROCEDURE**

**CLOSE ALL RUNNING PROGRAMS**

**Insert the CD into the drive**

(If a window appears displaying the contents of the CD, this may be closed)

On most machines the installation will commence automatically, in this case turn to page 4.

If your machine does not start the installation automatically, please refer to the following instructions to start the process manually.

If your machine has a CMS2 Menu type, as shown here;

**'click' the blue Floppy Disk Icon**

**Select Install Software via CD ROM Drive 'D'.**

Turn to page 4.

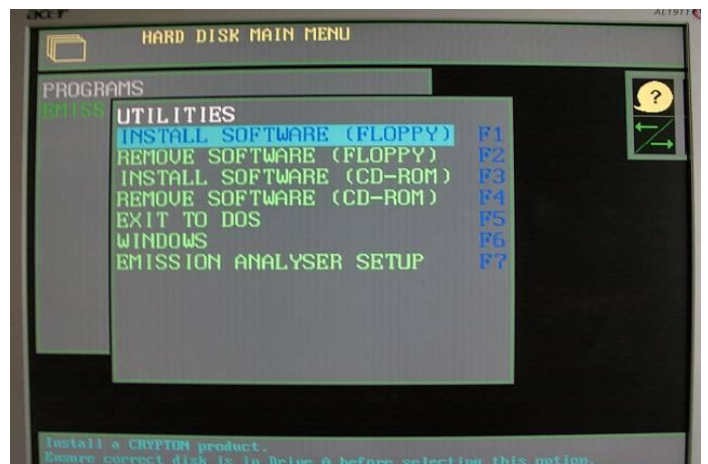


If your machine has a CMS1 Menu Type, as shown here;

**Select the utilities tile by pressing 2 on the keyboard.**

**Press F3 Install Software (CD-ROM)**

Turn to page 4.



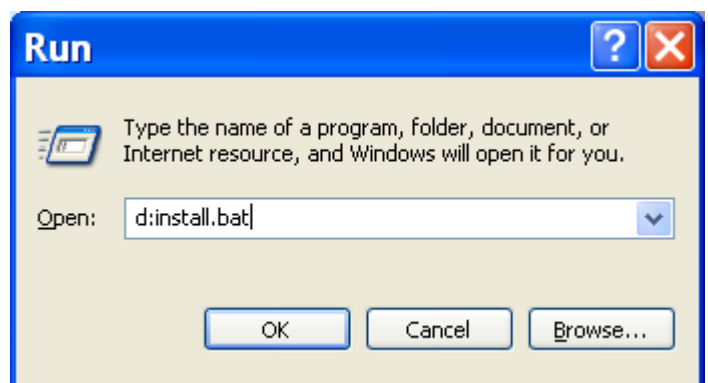
For machines that do not use Crypton CMS1, or CMS2 menu types;

**'Click' Windows 'Start' button**

**Select 'Run'**

A Command box will appear, type **'D:install.bat'**

**Click 'OK'**



The installer should determine your machine type in order to install the correct software. If the installer cannot determine your machine type, the installation will finish, and you will be given on-screen instructions to manually select and install the correct software for your machine type. Our Product Support team will be happy to give step by step instructions wherever required.

**[If your machine is a 700 series please turn to page 5 for instructions](#)**

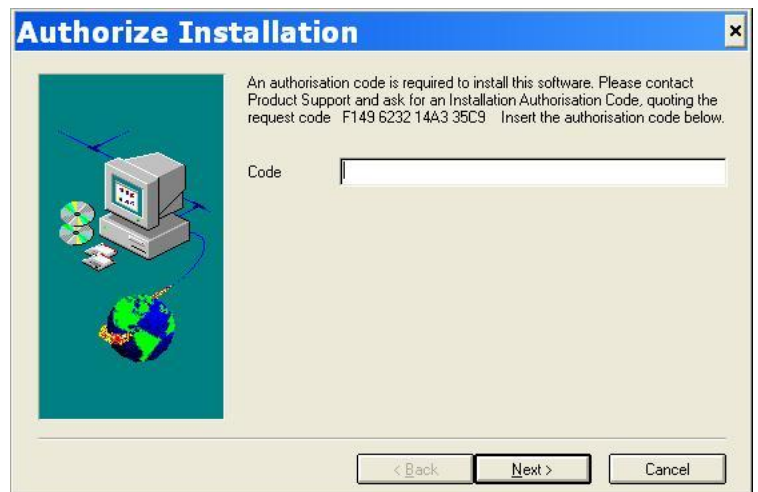
Wait for Installshield to load.

You will then be prompted for an authorisation code. Make note of the code displayed in the information text and ring the special authorisations number:

**0844 665 7616**

whilst the code is on screen – ***If you restart the install, the code will change!***

Enter the response code issued to you in the box.



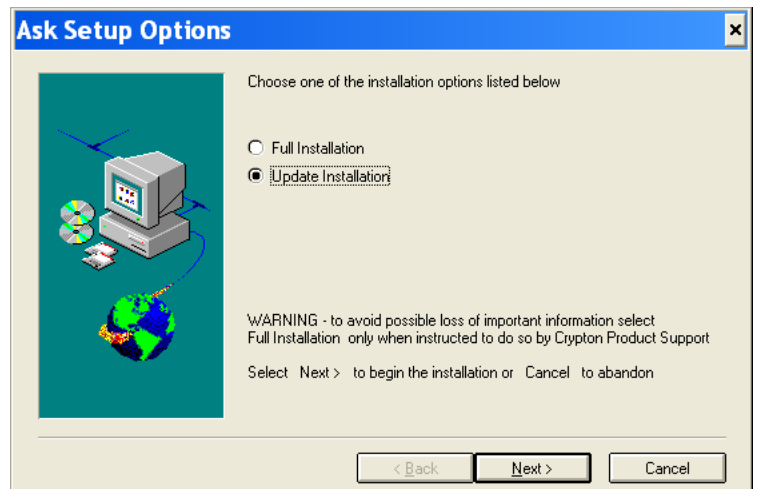
**'Click' next (or press enter if no mouse).**

Installation will proceed when the code is accepted.

At the 'Setup Options screen **Update Installation** is already highlighted.

**'Click' next (or press enter if no mouse).**

Files will now be copied to your computer.



When the installation is complete remove the CD from the drive.

**'Click' next to restart (or press enter if no mouse).**

Put the CD in a safe place in case it is required again at a later date.

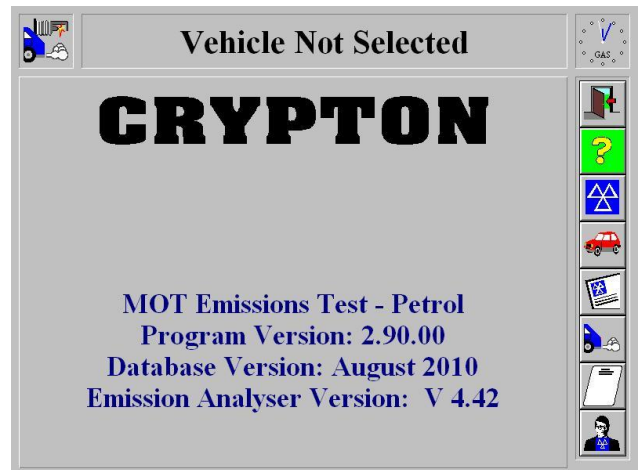
On restart you may see 2 windows on the screen displaying the new programs files;

**'Click' the top-right cross on each to close**





To ensure the update is correctly installed, launch the Emissions test (petrol) software and you will see the updated Database version displayed on-screen.

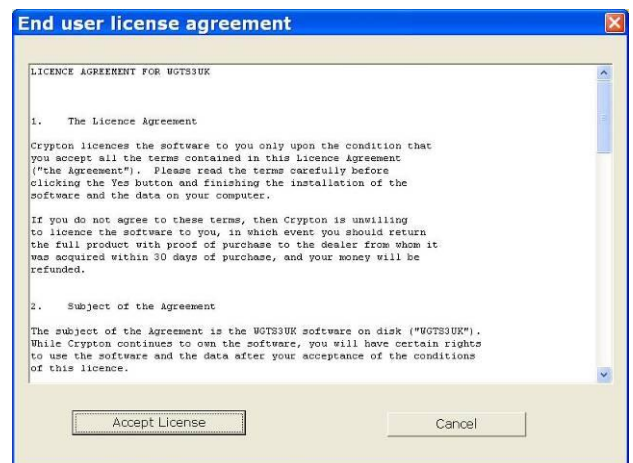


When running the new emissions program the windows firewall may display Windows security alerts '**Click**' **UNBLOCK for all alerts**

**Note: On your first MOT test following the update you may need to click your default MOT tester's name to proceed past the data entry screen.**

### **700 SERIES INSTALLATION**

A licence agreement screen will appear – read & tick to accept the licence.



You will then be prompted for an authorisation code. Make note of the code displayed and ring the special Authorisations number

**0844 665 7616**

whilst the code is on screen

**If you restart the install, the code will change!**

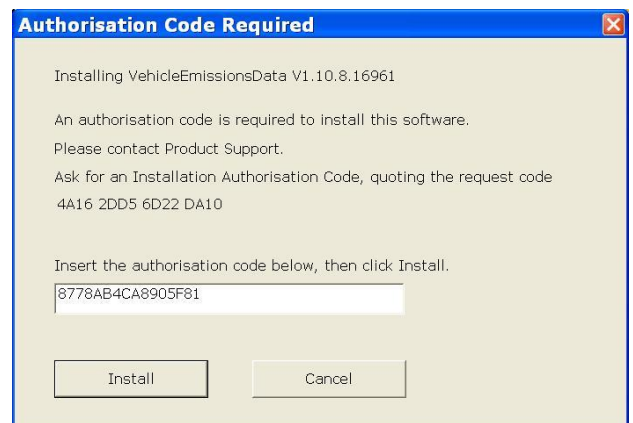
Enter the code issued by Crypton into the text box.

**'click' Install**

Automatic installation will now commence.

When installation has finished restart your PC.

Remove the installation disk, and keep it in a safe place.



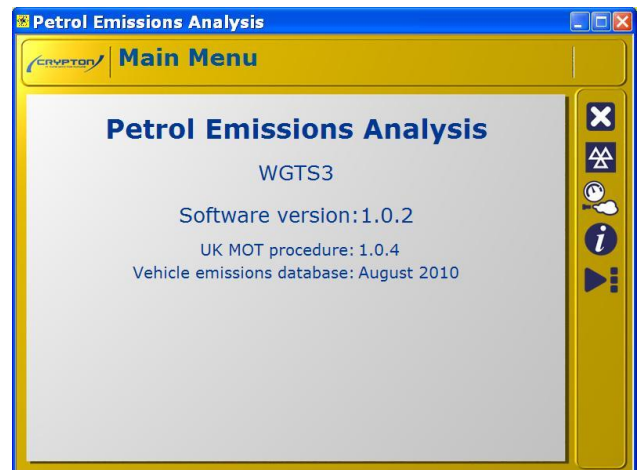


When running the new emissions program the windows firewall may display Windows security alerts

**'Click' UNBLOCK for all alerts**



To ensure the update is correctly installed, launch the Emissions test (petrol) software and you will see the updated Database version displayed on-screen.



### **Update by Floppy disk**

If you are unable to update **WGTS2** by CD-ROM the installation CD contains all the required files to make your own floppy disk installation set.

The files are located in the root of the installation CD, in two folders; 'disk 1' and 'disk 2'.

Copy the contents of these folders onto two formatted floppy disks and label them accordingly.

**Our product support team can offer further options and assistance if required.**

Ensure you have cleaned your floppy disk drive using an appropriate floppy drive cleaner.

Close all running programs to return to the Crypton menu

With disk 1 in the drive select the 'install from floppy disk' option from your Crypton menu system, as detailed on page 3.

Follow WGTS2 installation instructions from page 4 of this instruction sheet to continue... The installer will prompt you to change disks, when required.

**Crypton Ltd, Hopton Road Industrial Estate, Devizes, Wiltshire, SN10 2EU**

**Support lines - Tel: 0844 665 7610 - Fax: 0844 665 7604**