



Bluetooth communication for Battery Tach Device

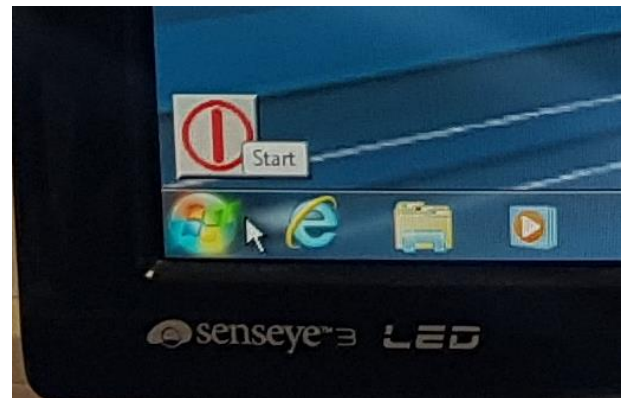
Setup guide

Setup Guide

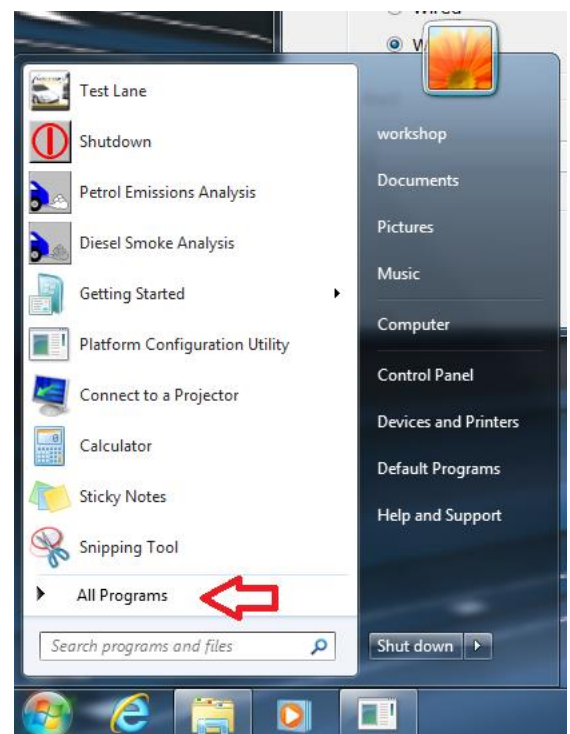
1. Close the Petrol and Diesel programs and make sure you are back on the Crypton desktop



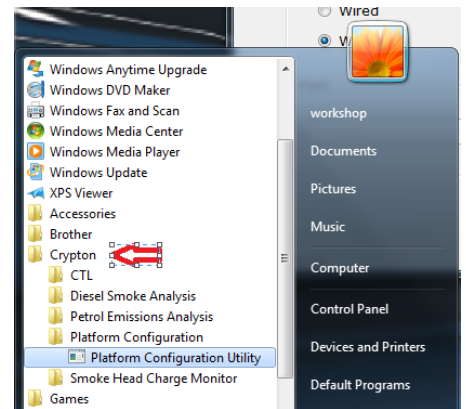
2. Move the mouse to the bottom left of the screen to bring up the windows start button



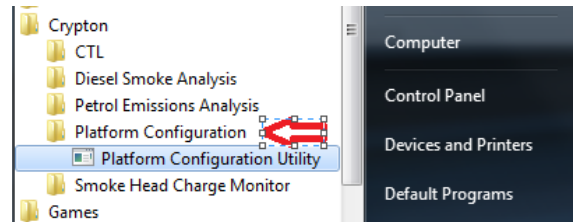
3. Click the start button and then click "All Programs"



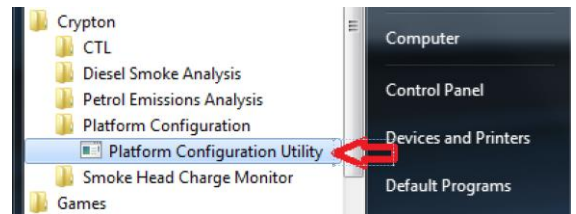
4. Click the “*Crypton*” folder



5. Click the “*Platform Configuration*” folder



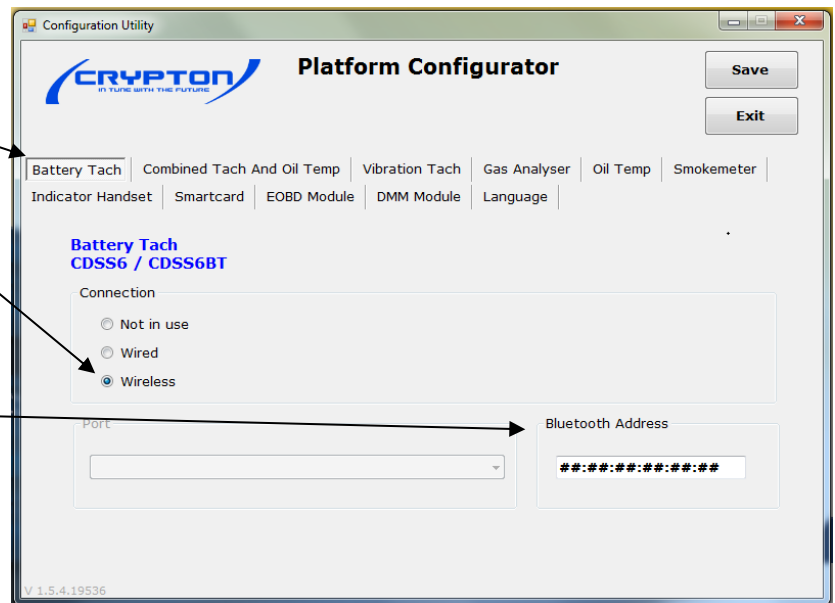
6. Click the “*Platform Configuration Utility*” folder



7. Select "Smokemeter"

8. Make sure "wireless" is selected

9. Now enter the "Bluetooth Address" that is on the replacement device on the White label(the Bluetooth Address can be found on the white label under the barcode next to "BTID")



10. Click "save" and then "Exit" at the top right of the program

11. And then restart the PC by clicking the "shutdown" button

12. Start the PC again, open the required program and check the equipment is communicating by running a test.

Continental Automotive Trading UK Ltd. 36 Gravelly Industrial Park, Birmingham, B24 8TA
Sales: +44 (0)844 665 7613 | Support: +44 (0)844 665 7610 | sales@cryptontechnology.com | www.cryptontechnology.com

Crypton – A brand of the Continental Corporation

E & O E. The Company reserves the right to introduce improvements in design or specification without prior notice.

