



Bluetooth Communication for Smoke Meter Setup Guide

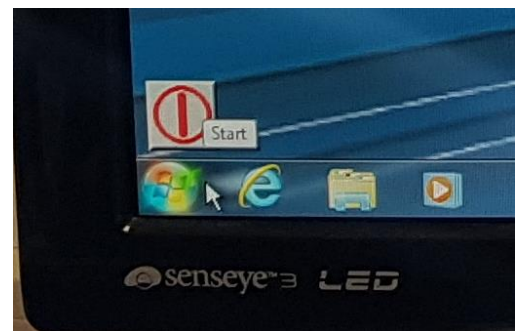


1 DX.260 Smoke Meter

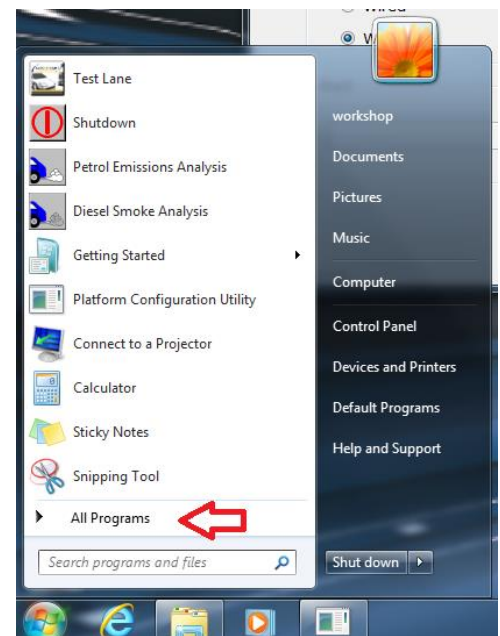
1. Close the Petrol and Diesel programs and make sure you are back on the Crypton desktop



2. Move the mouse to the bottom left of the screen to bring up the windows start button

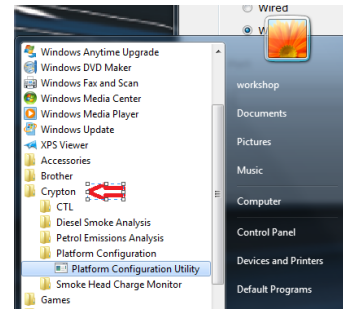


3. Click the start button and then click "All Programs"

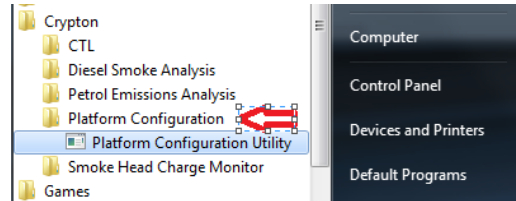


4. Click the "Crypton" folder

- >
- >
- >
- >
- >
- >
- >
- >

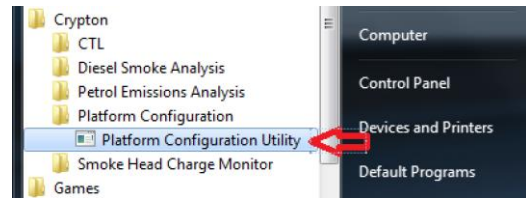


5. Click the "Platform Configuration" folder



6. Click the "Platform Configuration Utility" folder

- >
- >
- >
- >
- >
- >
- >

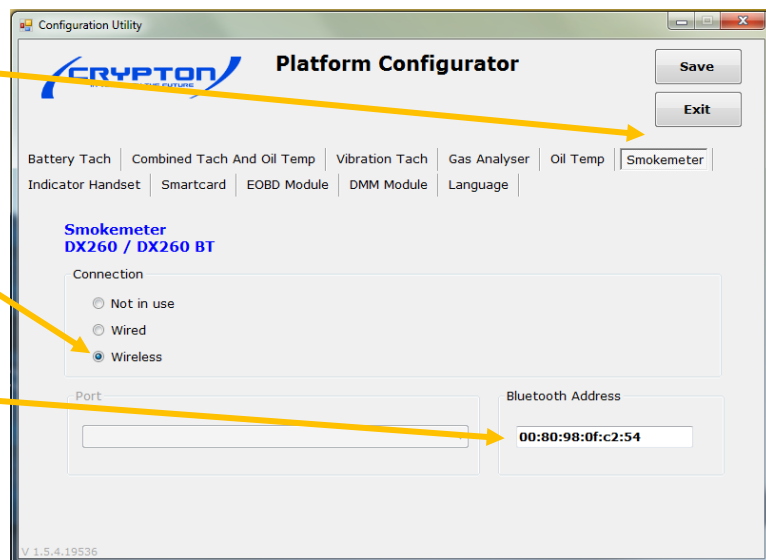


7. Select "Smokemeter"

8. Make sure "wireless" is selected

- >
- >
- >
- >
- >

9. Now enter the "Bluetooth Address" that is on the replacement device on the label (the Bluetooth Address found on the white label under barcode next to "BTID")



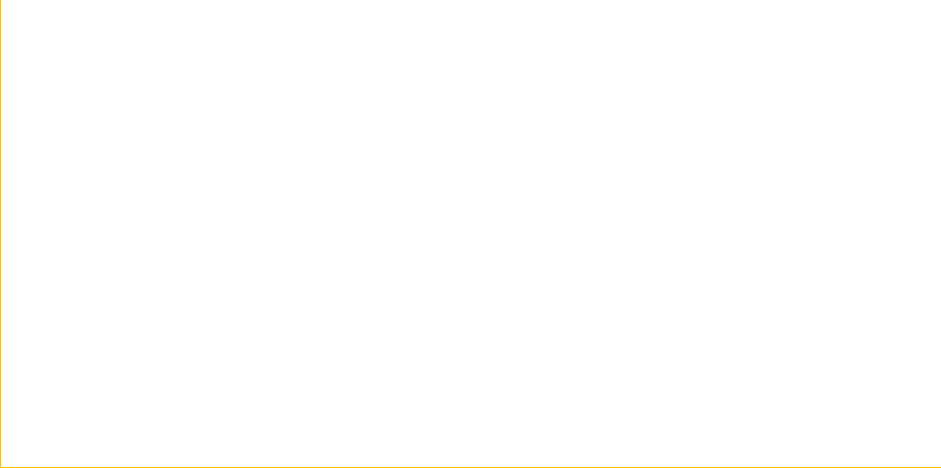
White can be the

10. Click "save" and then "Exit" at the top right of the program

11. And then restart the PC by clicking the "shutdown" button

12. Start the PC again, open the required program and check the equipment is communicating by running a test.





With all the quality, service and backup you would expect from a UK company with a long standing history like Crypton.

E & O E. The Company reserves the right to introduce improvements in design or specification without prior notice.
The sales of this product to our standard terms, conditions and relevant product warranty.

