

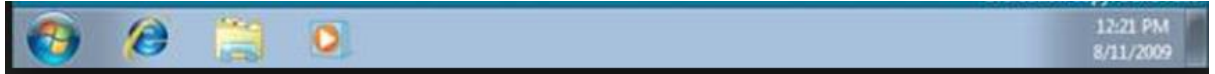


# How to find the BT code without the label

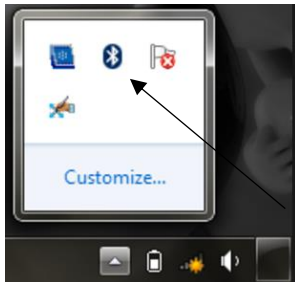
Guide

# Guide

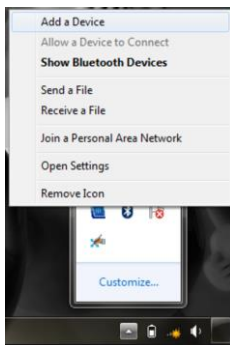
1. Move the mouse cursor to the bottom right to bring the start task bar up



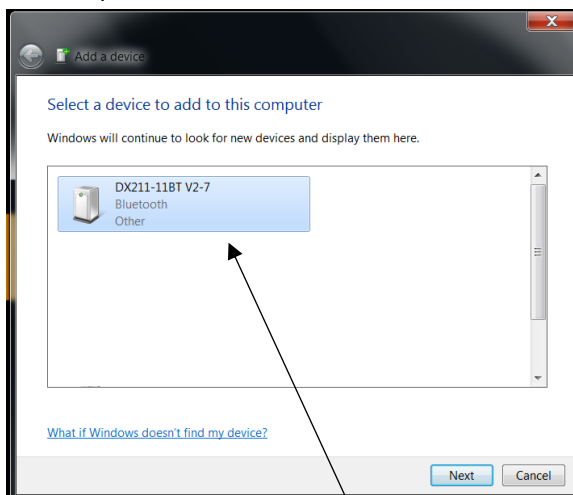
2. On the taskbar, find the BT icon (may need to click on show hidden icons first the arrow pointing up ).



3. Right click it and select "Add a device"

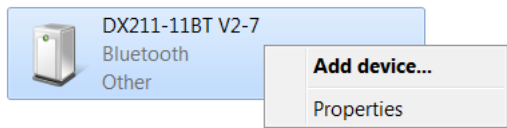


4. System should scan for any BT devices in the area (if finding oil temp ensure it is out of holster).

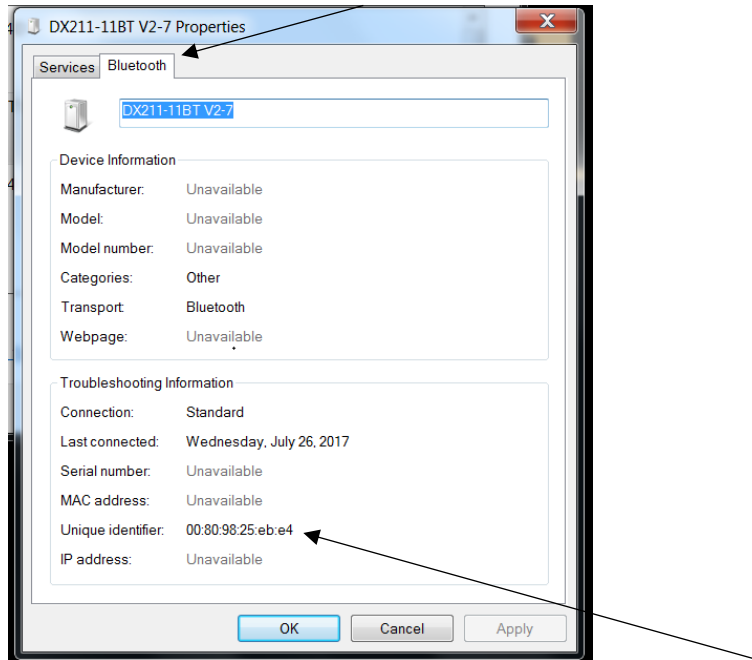


5. Find and select the device you require the ID for

6. Right click it and select "Properties"



7. On the next screen select "Bluetooth" Tab at the top



8. Near the bottom there will be "Unique Identifier", this is the **BlueTooth ID** for the device.
9. Note this down and enter into the platform config as required.

Continental Automotive Trading UK Ltd. 36 Gravelly Industrial Park, Birmingham, B24 8TA  
Sales: +44 (0)844 665 7613 | Support: +44 (0)844 665 7610 | sales@cryptontechnology.com | www.cryptontechnology.com  
**Crypton – A brand of the Continental Corporation**

E & O E. The Company reserves the right to introduce improvements in design or specification without prior notice.

