



CCP900

Installation Instructions

1. Installation instructions 900

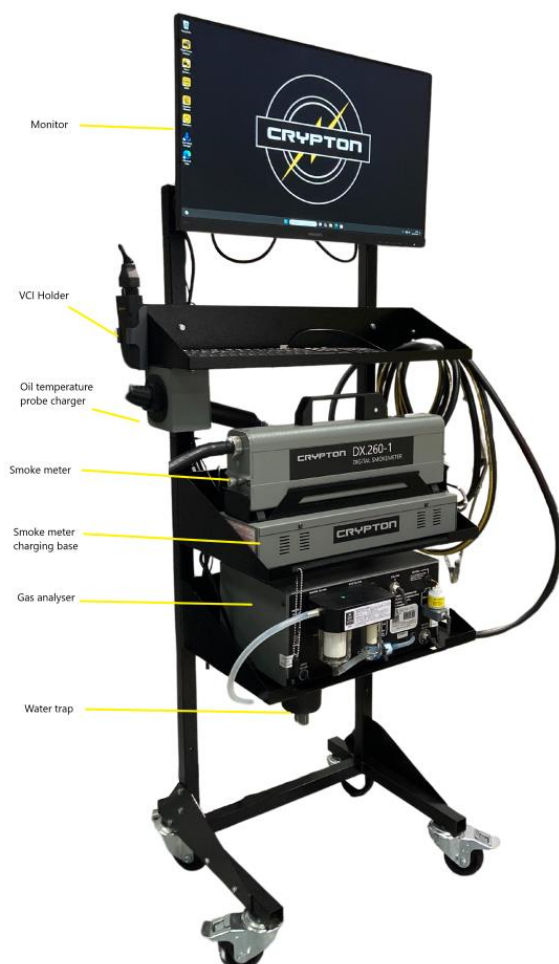
Series Products

Important:

Every reasonable effort has been made to ensure that information within these Installation Instructions is correct at the time of release, but Crypton cannot accept responsibility for any errors that may occur. Errors and Omissions excepted.

Warning:

Do not attempt to operate this equipment unless you have read and understood the supplied instructions including the safety precautions.



SPECIFICATION

Crypton have a program of continued product development and therefore reserve the right to amend product specifications without prior notice.

COPYRIGHT

© Continental Automotive 2024 - 2030. All rights reserved.

No part of this publication may be reproduced, stored in a retrieval system, or transmitted in any form, electronic, mechanical, photocopying, and recording or other means without prior permission in writing from the company.

CCP900/CSP900

The trolley frame is supplied with the main parts fitted and wired, the exceptions being the wheel kit (where ordered), the monitor, the smoke head and the temperature probe adaptor.

Wall mounting

Use the 6 keyholes provided in the rear of the frame to attach to mount using wall fittings. (Not provided)

Fitting the optional base

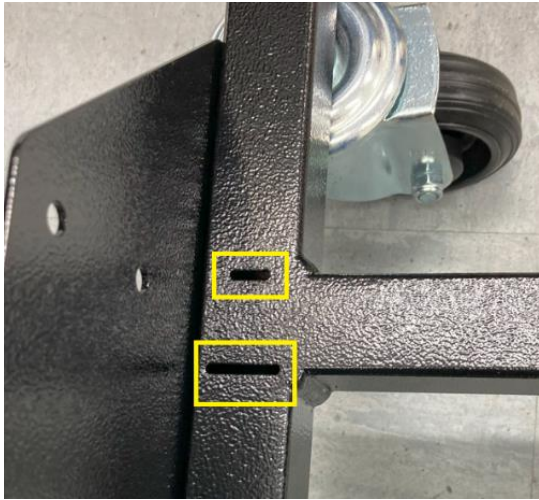


Figure 1



The wall frame is designed to fit only one way into the base frame, see Fig.1
Apply the brakes on the front caster wheels. Release the side plates slightly slide the wall frame into the slots on the base frame and

Figure 2



install the 4 M6 hex head bolts and washers (2 per side) shown Fig.2 and fully tighten all 10 bolts.

Fitting the monitor



Figure 3

The monitor is already attached to its mounting plate, using the M8 bolt and washers as shown Fig.3 bolt the bracket to the top bar, do not overtighten the Nyloc nut or the screen rotation will be restricted.

Attach the prewired PC to the mounting bracket on the rear of the monitor, slide the locking bar into position. Connect the HDMI cable and power cables to the monitor.

Smoke meter

Fit the probe to the smoke meter by pushing the tube into the externally threaded inlet, tighten the knurled nut to secure. Place the smoke head on the charging base.

Oil Temperature probe and adaptor

Clip the probe to the Bluetooth adaptor by pushing the 5 pin connector into the 5 pin receiver on the adaptor DO NOT TURN. The adaptor fits into the charging unit under the keyboard shelf. A red led will show when charging.

Gas analyser (when supplied)

The gas analyser is connected but requires the sample pipe to be attached to the water trap connector, a "P" clip is provided to secure the sample pipe to the gas analyser shelf.

Mains connection

Plug the mains lead into a suitable earthed mains socket.

Optional fittings

Printer shelf

The additional shelf can be attached to the wall frame using the supplied M6 Hex head bolts and the nutserts provided under the gas analyser shelf.

VCI Holder

The VCI Holder can be attached to the keyboard shelf using the M5 nuts provided at the opposite end to the gas sample pipe holder. Connection instructions for the DAD C1 VCI are included with it.

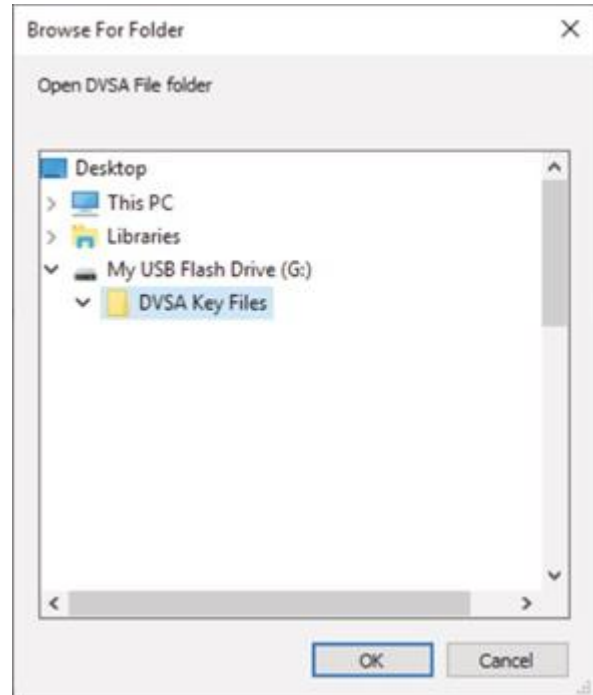
Operating instruction manuals are stored on the PC and a shortcut is provided on the desktop.

DVSA MTS connection instructions

CONFIGURING THE DVSA MTS CONNECTION

Note:

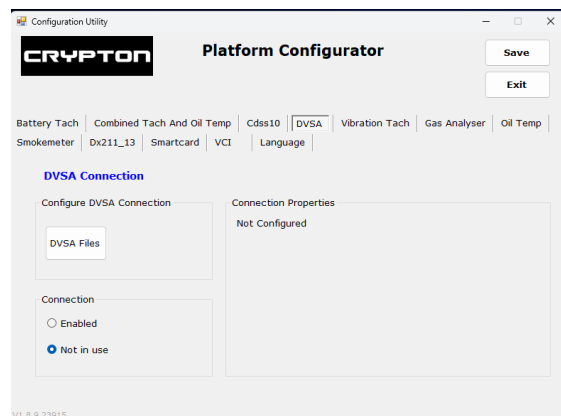
You will require the DVSA supplied key files for this process. If the files were supplied as a ZIP archive, ensure you have extracted the contents of the file to a known destination.



LAUNCH PLATFORM CONFIGURATOR SOFTWARE:

Type Platform Configuration Utility into the search bar, or click Windows Start button and go to the Crypton start menu folder group to locate Platform Configuration Utility.

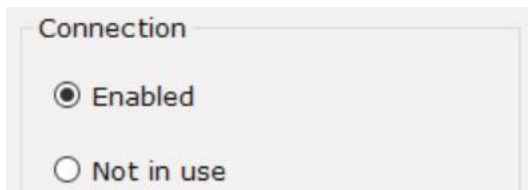
Select the DVSA tab:



Click the DVSA Files button and browse to the directory folder where your DVSA key files were extracted, click OK.

Your key files will be copied, and connection settings will be configured. When completed the program will display the properties for your site.

Ensure the connection is set as Enabled.



Click Save, then Exit.

Note: If a USB memory stick was used to transfer the DVSA key files it can now be safely removed.

AFTER SALES SERVICE

Apart from the routine maintenance and adjustments stipulated in this manual the equipment must not be tampered with in any way. All further servicing must be carried out only by an engineer from an Authorised Agent. Failure to observe these conditions will invalidate the Guarantee.

Contact details are provided on the unit.

Continental Automotive Trading UK Ltd

Unit 36 Gravelly Industrial Park | Birmingham | B24 8TA

Tel: 0121 725 1400

Email: salesorders@continental-corporation.com

Crypton – A trademark of the Continental Corporation

Legal Notice

The information in this document contains only general technical descriptions and performance characteristics, the applicability of which can depend on further factors in case of actual use. It is not meant or intended to be a specific guarantee of a particular quality or durability.

An obligation to provide the respective characteristics shall only exist if expressly agreed in the terms of contract. We reserve the right to make changes in availability as well as technical changes.

CRYPTON